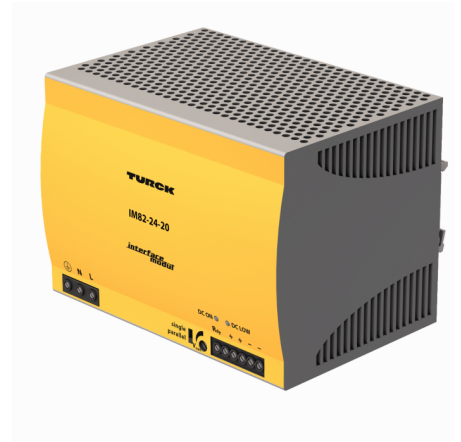
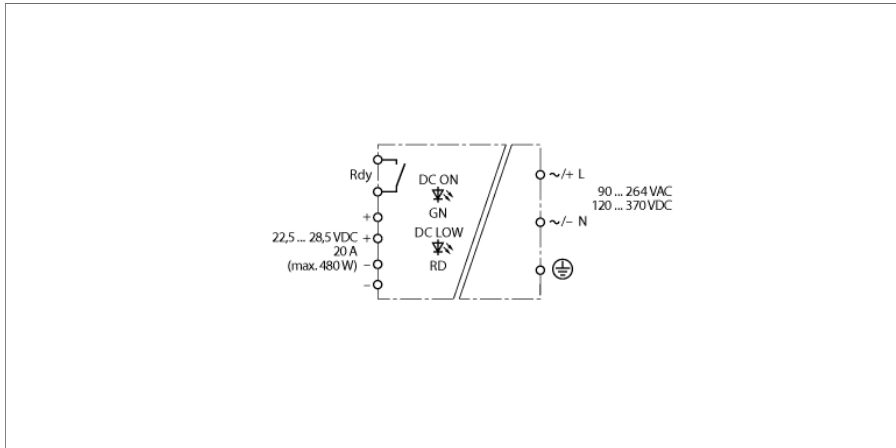


**Switching power supply
IM82-24-20**

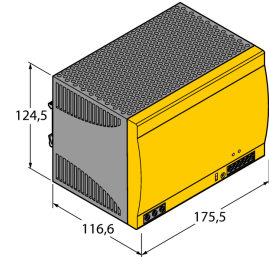


- cULus listed
- Safety extra-low voltage SELV IEC/ EN 60950
- SEMI-F47
- Output voltage adjustable 22.5...28.5 VDC
- Nominal current 20 A
- Single/parallel operating mode
- Surge protection
- Universal operating voltage
- Mains failure bridging up to 30 ms
- High efficiency
- Parallel operation possible
- Natural air cooling
- Power-good relay

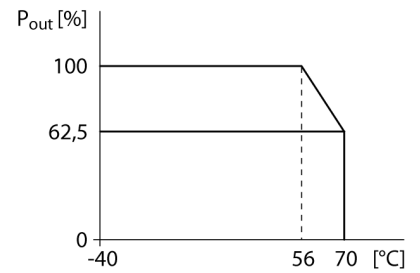
**Switching power supply
IM82-24-20**

Type designation	IM82-24-20
Ident-No.	7545044
Dimensions (W x L x H)	175.5 x 124.5 x 116.6mm
Protection class	IP20

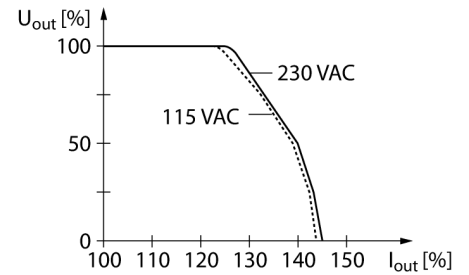
Dimensions



Derating



Short-circuit behaviour



Parallel operation

